

# THE PLOD

March 2026

## Wonthaggi and District Historical Society's Archives - Photographs

The society has quite an extensive range of photographs in its collection. Not only are there photographs of the town and its origins and residents but also of the surrounding district. Here is a very small selection covering a variety of topics. We have omitted mining and railway scenes. So far we have catalogued close to 4000 photos with many still to be dealt with.

### Wonthaggi



Is this the first motor car to drive down Graham Street?



Early view looking down McBride Avenue around 1911 with Baillieu St in the foreground. Note the absence of Church of England, Llewellyn and Wilson Drapery (now Foons), Railway Station (the Goods Shed is visible) and Taberner's Hotel.



View of Wonthaggi from the town reservoir. Note the Tech school directly opposite, St. Joseph's Church, convent and tennis courts. Mine manager's residence, Presbyterian Church, Dr. Sleeman's house as well as Baptist, and St. George's Church also visible.



Early pastime - hunting and fishing. A very successful day! Note the unusual construction of the upturned boat.

## Archies Creek



Original vegetation. The forest at Archies Creek before clearing the land for agriculture. This is Kennedy's Mill on Mill Rd. Archies Creek,



Very early photo of Archies Creek. Note the pub in the centre and the decimated vegetation in the background.

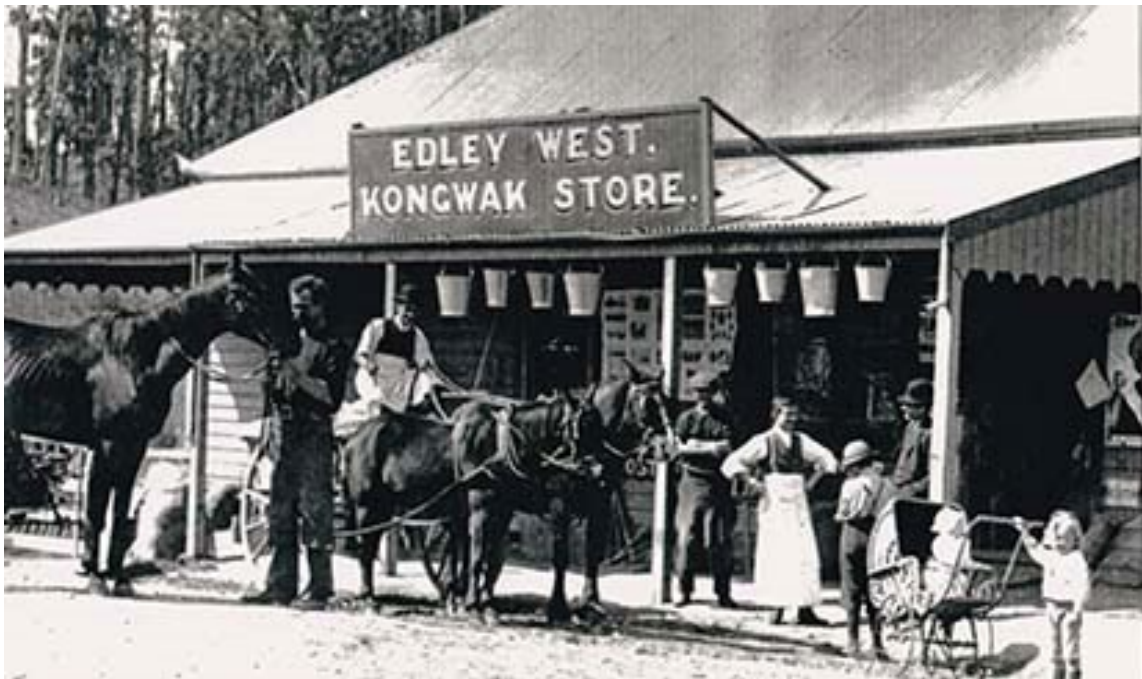


Another view of Archies Creek township looking in the other direction. Again the pub in the centre. And you think our roads are bad now! The football ground out of sight to the left.



Archies Creek was originally known as Ryanston. This match took place on the Archies Creek oval in 1910. An interesting match – there was a major dispute and both teams played all day for one point in favour of Ryanston!

## Kongwak



First Kongwak store. Note the dense forest in the background.



The first Kongwak Butter Factory. Typical house construction of the time.



An enlarged and improved Butter factory at Kongwak. Typical horse and cart transport of cream cans in the foreground.



The unused Kongwak Butter Factory as it exists today.

## Cape Paterson 1st surf



The original sand dune almost devoid of vegetation. This photograph was taken in the 1960s. The site of the Surf Life Saving Club building out of sight to the right.



Looking over the 1<sup>st</sup> Surf dune towards the embryonic township of Cape Paterson. First beach facilities constructed can be seen in the center background.



Aerial view of early Cape Paterson 1<sup>st</sup> Surf. Note the beginnings of major change. Signs of revegetating the dunes with marram grass can be seen. The occasion was a Surf Life Saving Club Carnival with surf life boats on the beach. Note the Surf Life Saving Club's building centre right. A growing township in the background.

## Inverloch



The original pier and Customs House at Inverloch. The location of the Customs House is now the car park by the current pier!



This Blue stone wall went from St. Kilda Street to beyond Pt. Hughes. Today the sand has buried most of the wall. Photo circa 1970s.

## Glen Alvie



Rifle clubs were common in the local rural community. This photo was taken at Glen Alvie at a match between Wonthaggi and Glen Alvie on December 14<sup>th</sup> 1912. Note the involvement of Women.



The devastating aftermath of fire at Glen Alvie.



A koala visiting the Pitts' farm overlooking Wonthaggi's water supply. This reservoir was alternatively known as either the Lance Creek or the Kongwak Reservoir.

Compiled by Jill Miles and Bob Tyler